

UL1310 CLASS 2 POWER UNITS

AD015x, AD025x系列

POWER SUPPLY, CLASS 2 DIRECT-PLUG-IN, 15.5VA,22.5VA



特性 General Specification:

- ◆ 功率 Power—15.5VA, 22.5VA
- ◆ 绝缘强度 Dielectric Strength — 2500VRMS Hi-pot
- ◆ 输入电压 Input Voltage — 120Vac, 60Hz
- ◆ 输出电压 Output Voltage — 15.5V or 9V
- ◆ 输出效率 Output Efficiency — Meet DOE V or VI rated at 115Vac input.
- ◆ 绝缘等级 Insulation Class — Class B (130°C)
- ◆ 输出端 Output terminal — #6-32 screw terminals or DC CORD

符合标准 Agency Standards

- ◆ UL, compliant to UL 1310, File # E310452
- ◆ CUL, compliant to CAN/CSA C22.2 No. 223.

机械结构 Mechanical

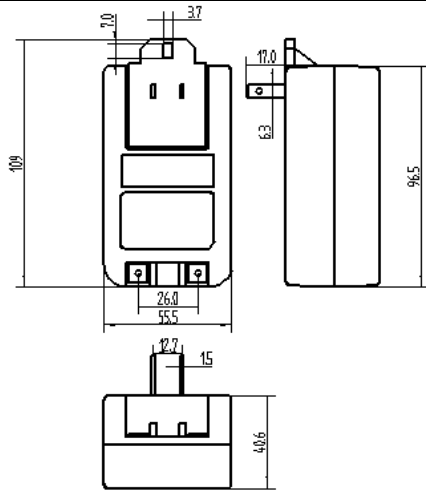


Figure 1

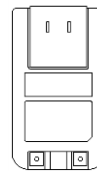


Figure 2

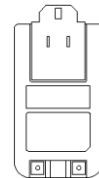


Figure 3

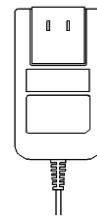
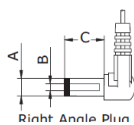
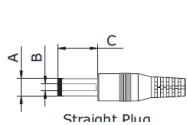
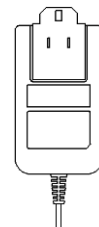


Figure 4



Can be customized according to customer 可以根据客户要求定做

Electrical Performance Parameter Table/电性能参数表

型号 Model	输入电压 Input voltage	额定输出电压 Output voltage	输入端 Input terminal	输出端 Output terminal	外形图 Outline drawing	认证 Certificate
ETS-AD0151-W155100	102-132V 57-63Hz	15.5Vdc±5% @ 1.0A	2 Pin	#6-32 screw	Figure 1	申请中
ETS-AD0152-W155100			2 Pin	#6-32 screw	Figure 2	申请中
ETS-AD0155-W155100			2 Pin	DC CORD	Figure 3	申请中
ETS-AD0156-W155100			2 Pin	DC CORD	Figure 4	申请中
ETS-AD0251-W090250	102-132V 57-63Hz	9Vdc+7%/-0% @ 2.5A	2 Pin	#6-32 screw	Figure 1	申请中
ETS-AD0252-W090250			2 Pin	#6-32 screw	Figure 2	申请中
ETS-AD0255-W090250			2 Pin	DC CORD	Figure 3	申请中
ETS-AD0256-W120100			2 Pin	DC CORD	Figure 4	申请中